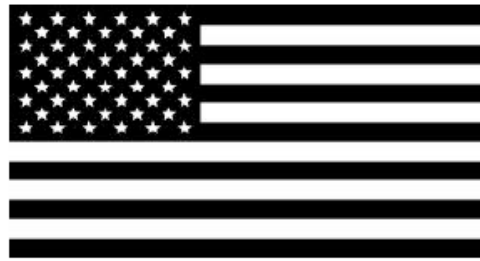


# PROFESSIONAL SERIES

Owner's Operating Manual

]]  
**HAGER**

An American Brand



**Hagerstown, MD**

# S U M M A R Y

*The Professional Series*

## *Introduction*

### Commando Professional

-- Dive Style	5
-- Overview	6
-- Luminescence	7
-- HR52 Movement	8
-- Display and Controls	9
-- Characteristics of the Commando	10
-- Operating Instructions	11
-- Using the Dive Bezel	12
-- Sun Compass	13

### GMT Traveler

-- In a Class of It's Own	14
-- Overview	15
-- Luminescence	16
-- HR60 Movement	17
-- Display and Controls	18
-- Characteristics of the Traveler	19
-- Operating Instructions	20-21
-- Standard Time Zones	22
-- Using the GMT Bezel	23
-- Sun Compass	24

*Warranty Information*     25

## INTRODUCTION

### Time is all we have. Live Fearlessly...

Congratulations on the purchase of your Hager / Ha•ger/ watch. You have made a good investment that will serve you reliably for many years to come. It's always fascinating to be in at the beginning of something great and we hope we've created a classic that will one day become iconic in its own right. Just as in nature, form follows function in watch design, but naturally, a watch is also about appearance – and style is something the Hager Professional Series has plenty of. A watch isn't a status symbol anymore—it's style symbol.

A modern watch, like a modern wardrobe, is one that combines the best of the old and the new in unexpected, highly individualized ways. It's about taste not tradition. Tradition is a great inspiration. As long as we keep reinventing it. While its clear that we've looked to the past to create the professional series, it is clearly a modern approach that represents a truly legitimate and interesting alternatives for aficionados looking for something other than the ubiquitous. What is extraordinary about the Professional Series is that it's one of the few brands that completely transcends its price category, regardless of demographic and age.

Our aim was to draw inspiration from iconic timepieces and incorporate subtle elements from the past with contemporary design features to create a new tradition. Our watches have participated in real action and have real stories behind them. Many brands claim some sort of military provenance in their history, however ours was born in a warzone!

The Professional Series bridges the past with the future, a stepping-stone between old and new. This isn't your father's watch. It's a watch for the future, one for the next generation, yet past generations can still connect with the Professional series as well. Numerous design flourishes have been assembled for the Professional Series, resulting in timepieces that are fresh, energetic and highly contemporary in their appeal. These are features which reveal timepieces that are very much their own master and over time when comparisons fade they will hold their own in the world. The Professional Series really doesn't compromise despite the fact that they sell for less than half the cost in a market where prices often reach the thousands for a luxury tool watch. The Professional Series are refined tool watches with a lifestyle twist.

*Pete*



# COMMANDO PROFESSIONAL

## *DIVING IN STYLE*

Pinstriped suit or wetsuit? The question doesn't even arise for Commando Pro, because this watch looks equally appropriate with both outfits. The new Commando Professional Diver is the ultimate in versatility. An important element of having a great look is wearing a great timepiece. For the well dressed man— and far more have found themselves on the wrist owners clad in a business suits instead of wet suits, the Commando Pro is both modern and an attractive everyday watch in the best sense of the word. Rugged enough go any distance, survive extreme situations and look appropriate in just about any environment, whether you're working in the urban jungle of a big city or embarking on a deep sea expedition to find a lost civilization in the silent perils of the murky marine underworld, the Commando Professional is a watch of action.

The Commando Pro is a timepiece that transcends the archetypical divers' watch. It is a watch that punches above it's weight and quality isn't sacrificed for the sake of budget. You can feel how perfectly crafted the Commando is when you take it into your hand. It's a watch that oozes luxury with many stylistic elements that echo an understated design. The blend works so well because we've rigorously eliminated superfluous decorations. From it's polished beveled edges, part raised and part-countersunk markers and matt midnight blue dial (which is an eye catching and very distinctive appearance) to the combination of the smooth, reflective surface of the unidirectional ceramic bezel, and it's domed sapphire crystal, this watch has an elegant feel on the wrist due to the curvature of the lugs, making it just as appropriate for business as for casual wear. Perfectly set into the bezel, the domed sapphire crystal arcs above the Commando's dial. The rotating bezel clicks into place with absolute precision, its subdivisions perfectly aligned with the corresponding strokes on the dial's minute-circle. The bezel rotates with exactly the right amount of give: stiffly enough to prevent it from being inadvertently shifted, but smoothly enough so that you needn't exercise an inordinate quantum of force. The luminous indices assure that the diving time can be read in the dark, hence the Commando can be worn scuba diving.

# COMMANDO PROFESSIONAL

## CASE

### Diameter

42 mm

### Material

316L stainless steel  
Polished beveled edges with satin finish or DLC coated

### Bezel

Uni-directional rotatable 120 click luminous graduated bezel  
Black or Blue model Ceramic bezel insert engraved numerals and graduations

### Waterproofness

Fully threaded crown and caseback offer 200 meters (660 feet) of water resistance

## MOVEMENT

### Functions

Self winding mechanical  
42 hour power reserve  
28,800 BPH

## CRYSTAL

Domed scratch-resistant sapphire crystal with anti-reflective treatment

## DIAL

Matt Midnight Blue two tiered dial with brass hour markers and Sword hands

Highly legible SuperLumiNova appliques for long-lasting luminescence

## BRACELET

Stainless steel, satin finished with polished sides, two-button deployment clasp and fold-out integrated diver's suit extension

steel, removable pinned links; folding clasp with push-pieces on either side to open the clasp and folding extension piece to lengthen the strap





### *The Commando Professional*

## LUMINESCENCE

The domed crystal with midnight blue dial displays generous hour markers for perfect visibility in dark environments. Fully charged in natural light, the luminescence is eye catching as it shifts from blueish-green to a uniform blue as light shifts to darkness and your eyes adjust to the wave length. The markers on the bezel are also luminescent, making it highly suitable for diving needs.





## **MOVEMENT**

### **HGR 52**

Self –winding mechanical movement

**Caliber:** HGR 52 automatic movement (Miyota 9015)

**Functions:** Quick correction of day and date, hours, minutes and seconds, second hand reset, date display at 4:30H

**Total Diameter:** 11.5 linge (25.6mm)

**Height:** 3.9mm

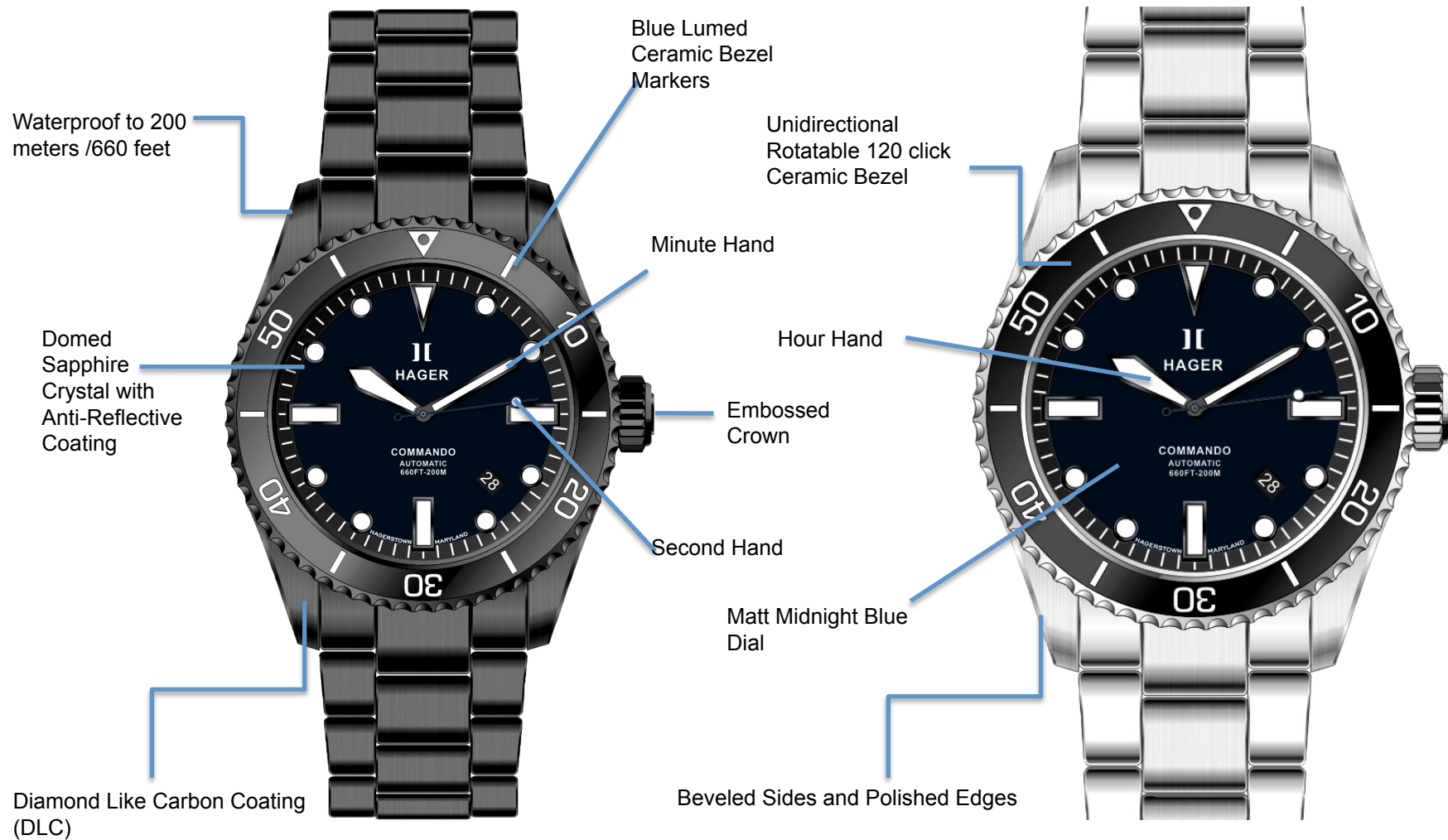
**Jewels:** 24 Jewels

**Power Reserve:** 42 Hours

**Beat Rate:** 4Hz/28'800 vibrations per hour/ Novodiac Shock Absorber

**Accuracy:** -10/+30 seconds per day

## COMMANDO PROFESSIONAL DISPLAY AND CONTROLS



# COMMANDO PROFESSIONAL OPERATING INSTRUCTIONS

## CHARACTERISTICS OF THE COMMANDO PROFESSIONAL

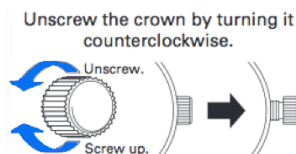


- Your watch operates using power obtained from a mainspring. If the watch is completely stopped, manually turn the crown approximately 20 times to wind up the mainspring to start the watch.
- While loss/gain of a quartz watch is indicated by a monthly or annual rate, accuracy of a mechanical watch is normally indicated by a daily rate (loss/gain per day). Our watches are highly accurate, however If your watch is running a little fast OR a little slow, we suggest the following:  
When you take your watch off at night, lay it in a position that assists in adjusting the time without the help of a specialist.
  - If your Hager is a little slow during the day, lay it flat, with dial up as this position tends to gain a few seconds during the course of the night.
  - If your Hager is running a few seconds fast, lay it in a vertical position with the crown down as this position will tend to lose a few seconds per night.
  - If your Hager is running more than a few seconds fast per day, lay it in a vertical position with the crown up. This position tends to lose a few more seconds per night than the previously suggested position.
- Normal usage accuracy of a mechanical watch varies according to conditions of use (time period that the watch is worn on the wrist, temperature environment, hand movement, and winding state of the mainspring).
- When the watch is affected by strong magnetism, it temporarily gains or loses time. If the watch encounters a strong magnetic field, the parts of the watch may be magnetized. In this case, repairs such as removal of magnetism are required. Do not leave the watch in place where it will be subjected to strong magnetism (for example, near television sets, loudspeakers or magnetic necklaces) or static electricity. Contact us if this should happen.
- The Hager Professional Series comes with a two year limited warranty. See our website [www.HagerWatches.com](http://www.HagerWatches.com) for more details.

# COMMANDO PROFESSIONAL OPERATING INSTRUCTIONS



PLEASE BE ADVISED: engaging the date function when dial hands are between 8pm - 2am can cause serious damage to the calendar gears of the internal movement as the watch gearing will already be aligning itself to change the date. It is therefore vital to avoid adjusting the calendar or moving the time backwards during this period. Such damage is not covered under warranty. You must advance the time past midnight before you can set the date again.



*After an extended period of non-use, the movement must be set in motion by winding the crown clockwise in its normal position approximately 20 times.*

**Flush-** The crown is fully screwed-down. The watch is completely sealed and the movement protected.

**(1st Position)** For Manual Winding- Unscrew the crown counterclockwise until it completely disengages from the threads. Once there, begin to wind the crown clockwise about 25-30 times away from you, do not go back and forth with the crown. This is only required if you have not worn the watch for 1-2 days.

**(2nd Position)** Setting the Date- Unscrew the crown counterclockwise until it completely disengages from the threads (the winding position). With your thumb and forefinger slightly pull on the crown to reach the 2nd extended position. To set the date, wind the crown upwards (towards 12 o'clock) until you reach the appropriate date. When completed, lightly push and screw the crown tightly back into place.

**(3rd Position)** Setting the Time- Unscrew the crown counterclockwise until it pops out from the side (the winding position). Extend the crown past the 2nd position, which is fully extended from the side. To set the time, wind the crown clockwise or counterclockwise until you reach the appropriate time. When completed, lightly push the crown back into position 1 and gently screw the crown in clockwise direction, then tighten it again until you feel some resistance. **Do not force! You must always ensure the crown is fully tightened before any use in water.**



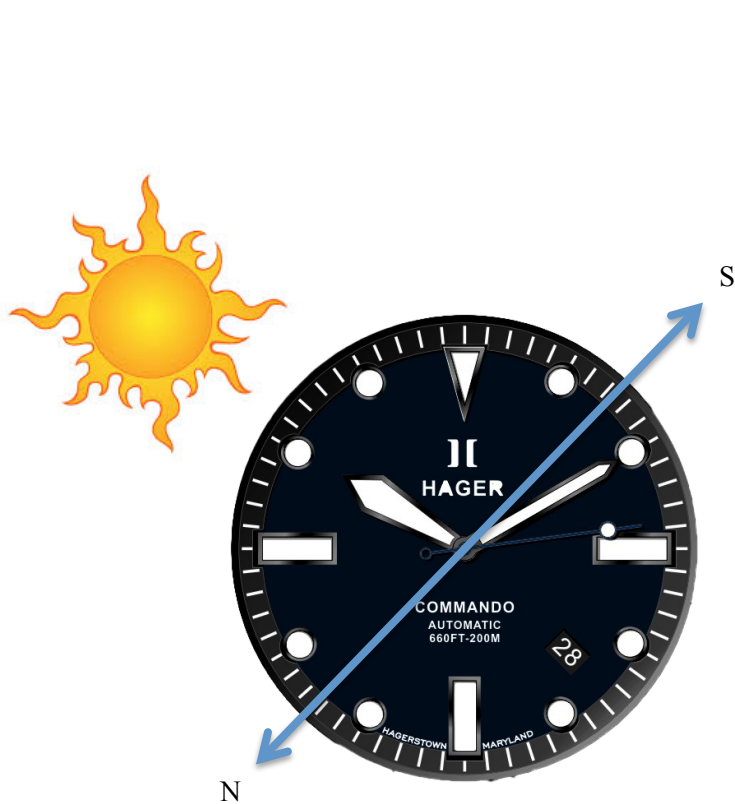
# USING THE DIVE BEZEL



Perhaps the most commonly seen bezel markers are on dive watches. These scales go from zero to sixty, indicating minutes in an hour, and are used to keep track of time spent underwater, a critical parameter along with depth and remaining air. The bezel of your watch is marked with 12 index markers: they are used as points of reference to mark the time of departure or a limit time one wishes to remember. The scale allows divers to time decompression stops with relative precision during ascents at the end of a dive. To use a dive bezel, set the zero marker opposite the minute hand; as time passes, you can read off elapsed time on the bezel without having to do any mental calculations. For safety, the bezel can only turn counterclockwise.

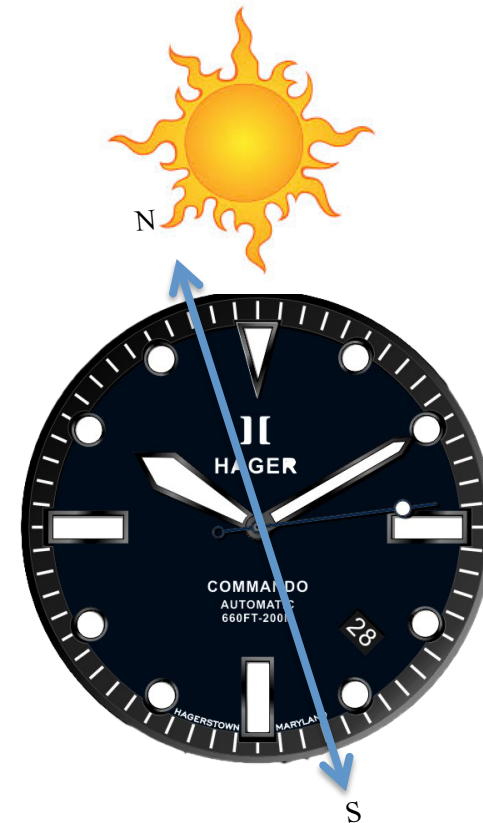


## USING THE COMMANDO AS A SUN COMPASS



### **In the Northern hemisphere**

Point the hour hand precisely towards the sun. In relation to the watch dial, the point located midway between the current time and 12 o'clock indicates the South, the North being exactly opposite.



### **In the Southern hemisphere**

Point the hour-marker located at 12 o'clock on the dial precisely towards the sun. In relation to the watch dial, the point located midway between the current time and 12 o'clock indicates the North, the South being exactly opposite



# GMT TRAVELER

## *Space In A Class of It's Own*

Ours is a globalized world of air travel and worldwide communications networks. In this world, it's an advantage to wear a watch that tells you what the time is when you are away and the time at home. To empower you, we've designed a Greenwich Mean Time (GMT) watch we call the TRAVELER that completely transcends its price category by offering features found only on other luxury watches. The GMT Traveler is impeccably well built, solid and is suitable for almost any setting.

In addition to conventional hour, minute and seconds hands, the 24 hour hand (blue hand with red arrow) can be independently set from the 12 hour hand, and the rotating ceramic bezel, used in conjunction with the 24 hour hand, gives the ability to display multiple time zones at the same time. The distinctively colored 24-hour hand displays the "home" or "local" reference time in a first time zone that can be read on the graduations on the bezel.

Like other luxury brands, the Traveler uses a 24 click bi-directional graduated ceramic bezel, one click for each hour. The rotation system that allows the bezel to be turned in either direction and locate with a positive click in each of the 24 hour positions, without any possibility of an intermediate stop or accidental changes. The powerful spring mechanism allows crisp, precise movements, and works reliably over time. Apart from securely indicating home or reference time, the bezel can also be rotated to read a third time zone using the 24-hour hand. Unlike many other luxury brands, the GMT bezel is also luminous which provides legibility no matter what the conditions when you're traveling.

The GMT Traveler offers an unprecedented combination of complexity and simplicity for a fraction of the cost that others brands are charging.

The abbreviation GMT stands for the term „Greenwich Mean Time“. It is named after a southern England town that marks the prime meridian of the World Time system. The earth is divided into 24 time zones, and time displays always refer to the Greenwich Mean Time. E.g. New York City belongs to the time zone GMT -5, Germany belongs to time zone GMT +1. In 1955, Pan Am was the first commercial airline to perform a transcontinental flight. The Pan Am pilots found it was difficult to adjust to traveling through different time zones and if they had a watch that could display a second time zone, they would feel less jetlagged. The iconic GMT wristwatch was born out of a special request from Pan American World Airways.



## GMT TRAVELER



### CASE

**Diameter**  
42 mm

### Material

316L stainless steel  
Polished beveled edges with satin finish or DLC coated

### Bezel

Bidirectional rotatable 24 click graduated bezel  
Black or Blue model Ceramic bezel insert engraved numerals and graduations

### Waterproofness

Fully threaded crown and caseback offer 200 meters (660 feet) of water resistance

### MOVEMENT

### Functions

24-hour display via additional hand  
Second time zone with independent rapid-setting of the hour hand  
Instantaneous date at 4 o'clock

Self winding mechanical  
40 hour power reserve  
28,800 BPH

### CRYSTAL

Domed scratch-resistant sapphire crystal with anti-reflective treatment

### DIAL

Matt Midnight Blue two tiered dial with brass hour markers and Sword hands

Highly legible SuperLumiNova appliqués for long-lasting luminescence

### BRACELET

Stainless steel, satin finished with polished sides, two-button deployment clasp and fold-out integrated diver's suit extension



### *The GMT Traveler*

## LUMINESCENCE

The domed crystal with midnight blue dial displays generous hour markers for perfect visibility in dark environments. Fully charged in natural light the luminescence is eye catching as it shifts from blueish- green to a uniform blue as light shifts to darkness and your eyes adjust to the wave length

One advantage the GMT Traveler has over other GMT watches is the fact that the markers on the Traveler's bezel are also luminescent which means you can easily and swiftly read different time zones in low- light conditions on the plane.



## **MOVEMENT**

### **HGR 60**

Self –winding mechanical movement

**Caliber:** HGR 60 automatic movement (based on the ETA 2836 caliber)

**Functions:** Quick correction of day and date, hours, minutes and seconds, second hand reset, date display at 4:30H and an adjustable 24 hour GMT hand that clicks positively while setting the time

**Total Diameter:** 11.5 linge (25.6mm)

**Height:** 5.67mm

**Jewels:** 26 Jewels

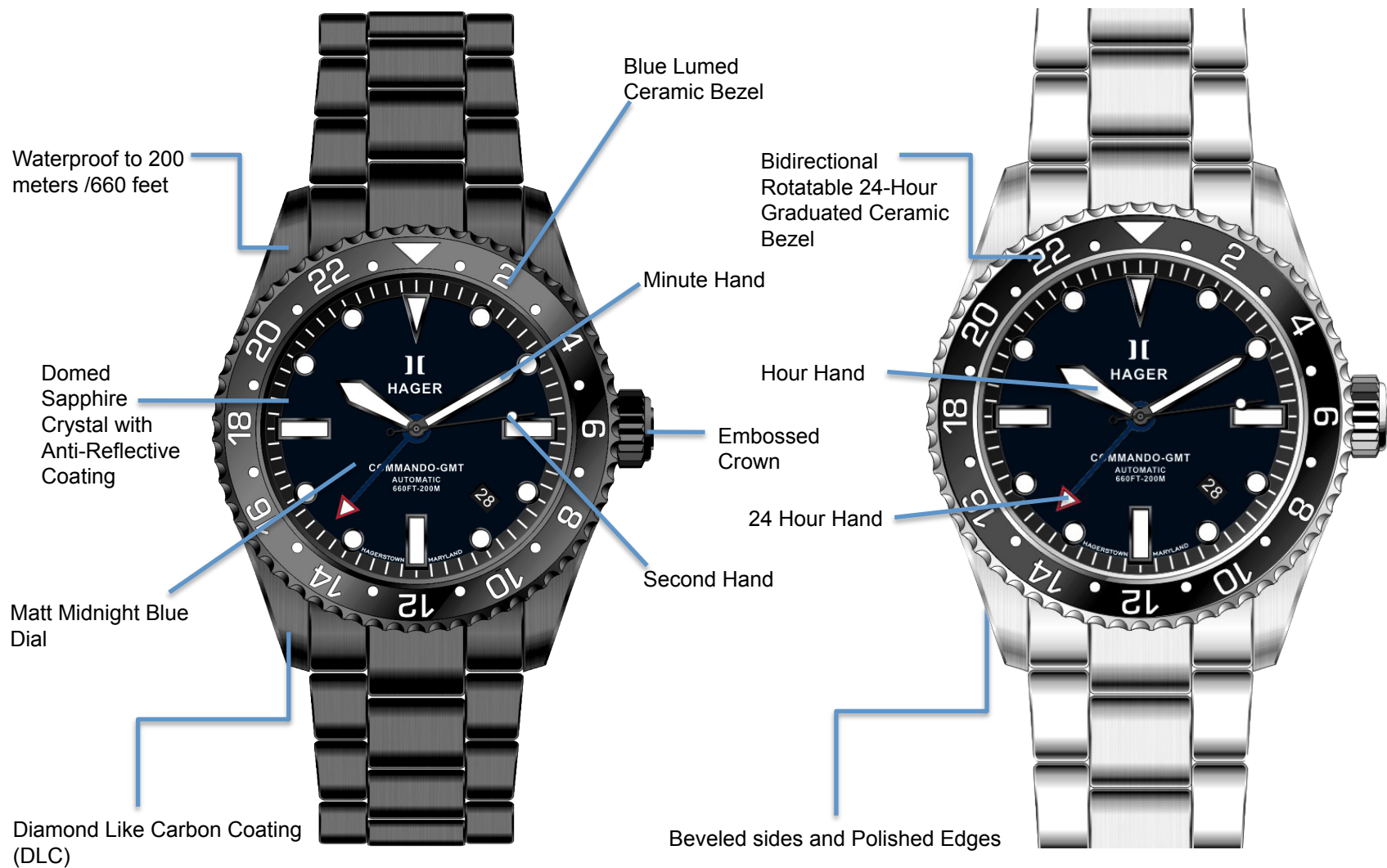
**Power Reserve:** 40 Hours

**Beat Rate:** 4Hz/28'800 vibrations per hour /Novodiac Shock Absorber

**Accuracy:** -5/+30 seconds per day



## *GMT TRAVELER DISPLAY AND CONTROLS*



# GMT TRAVELER OPERATING INSTRUCTIONS

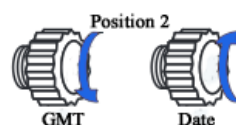
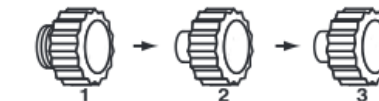
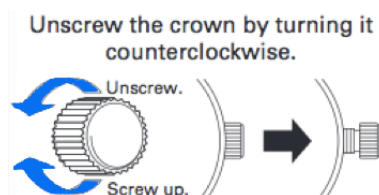
## CHARACTERISTICS OF THE GMT TRAVELER



- Your watch operates using power obtained from a mainspring. If the watch is completely stopped, manually turn the crown approximately 20 times to wind up the mainspring to start the watch.
- While loss/gain of a quartz watch is indicated by a monthly or annual rate, accuracy of a mechanical watch is normally indicated by a daily rate (loss/gain per day). Our watches are highly accurate, however If your watch is running a little fast OR a little slow, we suggest the following:  
When you take your watch off at night, lay it in a position that assists in adjusting the time without the help of a specialist.
  - If your Hager is a little slow during the day, lay it flat, with dial up as this position tends to gain a few seconds during the course of the night.
  - If your Hager is running a few seconds fast, lay it in a vertical position with the crown down as this position will tend to lose a few seconds per night.
  - If your Hager is running more than a few seconds fast per day, lay it in a vertical position with the crown up. This position tends to lose a few more seconds per night than the previously suggested position.
- Normal usage accuracy of a mechanical watch varies according to conditions of use (time period that the watch is worn on the wrist, temperature environment, hand movement, and winding state of the mainspring).
- When the watch is affected by strong magnetism, it temporarily gains or loses time. If the watch encounters a strong magnetic field, the parts of the watch may be magnetized. In this case, repairs such as removal of magnetism are required. Do not leave the watch in place where it will be subjected to strong magnetism (for example, near television sets, loudspeakers or magnetic necklaces) or static electricity. Contact us if this should happen.
- The Hager Professional Series comes with a two year limited warranty. See our website [www.HagerWatches.com](http://www.HagerWatches.com) for more details.

# GMT TRAVELER OPERATING INSTRUCTIONS

## QUICK SET INSTRUCTIONS IF YOU'RE AN EXPERT



*After an extended period of non-use, the movement must be set in motion by winding the crown clockwise in its normal position approximately 20 times.*

**Flush-** The crown is fully screwed-down. The watch is completely sealed and the movement protected.

**(1st Position)** For Manual Winding- Unscrew the crown counterclockwise until it completely disengages from the threads. Once there, begin to wind the crown clockwise about 25-30 times away from you, do not go back and forth with the crown. This is only required if you have not worn the watch for 1-2 days.

**(2nd Position)** Setting the GMT and Date- Unscrew the crown counterclockwise until it completely disengages from the threads (the winding position). With your thumb and forefinger slightly pull on the crown to reach the 2nd extended position. To set the GMT function, wind the crown downwards, the GMT hand will click

To set the date, wind the crown upwards (towards 12 o'clock) until you reach the appropriate date. When completed, lightly push and screw the crown tightly back into place.

**(3rd Position)** Setting the Time- Unscrew the crown counterclockwise until it pops out from the side (the winding position). Extend the crown past the 2nd position, which is fully extended from the side. To set the time, wind the crown clockwise or counterclockwise until you reach the appropriate time. When completed, lightly push the crown back into position 1 and gently screw the crown in clockwise direction, then tighten it again until you feel some resistance. **Do not force! You must always ensure the crown is fully tightened before any use in water.**

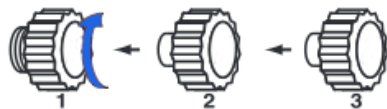
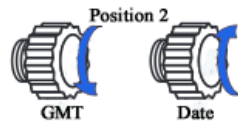
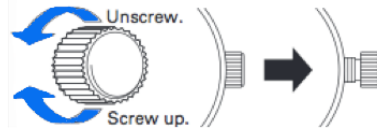
PLEASE BE ADVISED: engaging the date function when dial hands are between 8pm - 2am can cause serious damage to the calendar gears of the internal movement as the watch gearing will already be aligning itself to change the date. It is therefore vital to avoid adjusting the calendar or moving the time backwards during this period. Such damage is not covered under warranty. You must advance the time past midnight before you can set the date again.



## HOW TO USE THE GMT (Detailed Instructions)



Unscrew the crown by turning it counterclockwise.



### Second Time Zone

The second, independent hour hand (A) makes a complete sweep of the dial in 24 hours. Its position relative to the 24-hour markings inscribed on the dial rim can serve as a second timezone indication. The table (shown next page) can be used to calculate any time difference.

**Unscrew the water-resistant crown in an counterclockwise direction.**

**The hand is reset by pulling the crown out of position 2 and** and rotate the hand counterclockwise (down towards the 6 o'clock position) until you have reached the desired time indication.

### “The Easy Way to set the GMT”

Let's assume you just landed in London and the time is 0900hrs (9:00 am) and you want to keep track of the back home. You know the current time in London is 1400hrs (2:00pm) which is +5 hrs GMT (during DST not BST). So the easiest way to set the GMT is:

1. Advance the hour hands forward to midnight until the time reads 0000hrs (12pm) and the calendar date advances (leave the hands directly lined up at the 12:00 position)
2. Push the crown back to Position 2 and adjust (rotate) the GMT hand to the correct position that corresponds with 5 o'clock on the bezel insert (not the watch dial).
3. Now pull the crown out to position 3 and rotate the hands to the correct time local time.
4. Push the crown back to position 2 and rotate the crown upwards (towards 12) to change the date to the current date.
5. Pull the crown back out to position 3 and then push the crown back to position 1 (this ensures that the crown fully seats back into position 1. Now Press it in gently, and rotate the crown turning it gently in a clockwise direction, then tighten it again until you feel some resistance. Do not force!

PLEASE BE ADVISED: engaging the date function when dial hands are between 8pm - 2am can cause serious damage to the calendar gears of the internal movement as the watch gearing will already be aligning itself to change the date. It is therefore vital to avoid adjusting the calendar or moving the time backwards during this period. Such damage is not covered under warranty. You must advance the time past midnight before you can set the date again.

## STANDARD TIME ZONES OF THE WORLD



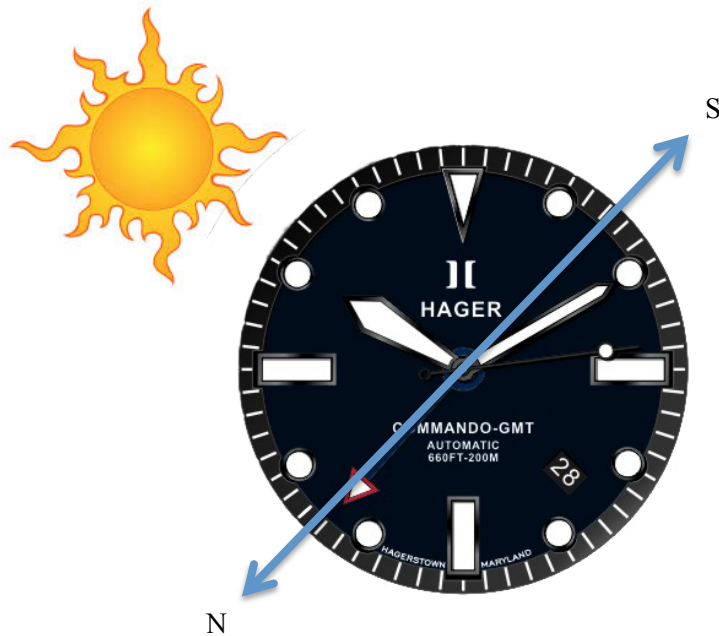
# USING THE GMT TRAVELER 24H BEZEL



The bidirectional rotating bezel features a 24-hour graduation that may be used as a 3<sup>rd</sup> timezone. According to the hour previously selected as the 2<sup>nd</sup> timezone, simply line up the hour in the 3<sup>rd</sup> timezone indicated on the bezel with the hand (A).

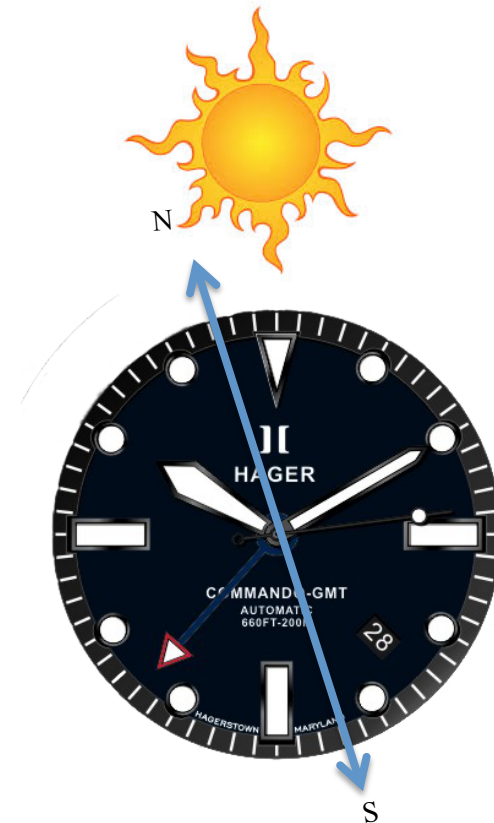


# USING YOUR GMT AS A SUN COMPASS



## **In the Northern hemisphere**

Point the hour hand precisely towards the sun. In relation to the watch dial, the point located midway between the current time and 12 o'clock indicates the South, the North being exactly opposite.



## **In the Southern hemisphere**

Point the hour-marker located at 12 o'clock on the dial precisely towards the sun. In relation to the watch dial, the point located midway between the current time and 12 o'clock indicates the North, the South being exactly opposite.



## WARRANTY INFORMATION

Your Hager wristwatch has been designed to give you years of outstanding timekeeping performance. You may, however, have some questions about your watch's guarantee or its regular servicing intervals. This section of the User Manual has been created to answer your questions and to provide you with information that will help you make sure your timepiece works optimally for as long as you wear it. Your Hager® watch is warranted by HAGER\* for a period of twenty-four (24) months.

**A mechanical watch is a precision mechanism which is asked to work 24 hours a day, indefinitely. Treat it with respect. Each Hager timepiece is designed and manufactured to the highest of standards.**

**This manufacturer's warranty does not cover:**

- normal wear and tear and ageing (for example scratched crystal; bezel; metallic bracelet). Damage to the crown.
  - any damage on any part of the watch resulting from abnormal/ abusive use, lack of care, negligence, accidents (knocks, dents, crushing, broken crystal, etc.), incorrect use of the watch and non- observance of the operating instructions provided by HAGER.
  - the Hager watch handled by non-authorized persons (for service or repair) or which has been altered in its original condition beyond HAGER's control.
- Any consequential or indirect damage resulting from the use, failure to operate, defects or lack of precision of the Hager watch. HAGER's OBLIGATION IS STRICTLY LIMITED TO REPAIR OR REPLACEMENT AS EXPRESSLY STATED IN THIS LIMITED WARRANTY. Please be aware that:
- Goods presented for repair may be replaced by refurbished goods of the same type rather than being repaired. Refurbished parts may be used to repair the goods.

### HOW TO MAKE A CLAIM UNDER THIS WARRANTY

In the unlikely event that service is required during the guarantee period, we recommend that you first contact [info@hagerwatches.com](mailto:info@hagerwatches.com) . You will be responsible for paying the expenses associated with making a claim under this Warranty, including postal or delivery expenses and any relevant taxes. Repairs after the guarantee period will be charged. Owner will be charged for postage, insurance and such costs as may be incurred outside the normal repair costs under the guarantee. Our service is, of course, also available after the guarantee period has expired for repair and maintenance work against an appropriate charge. [Payment in advance]. Sometimes it is cheaper to contact first a qualified watchmaker in your area. Please ask your watchmaker for a free estimate!

**Special recommendations:** What must I do to ensure that my Hager watch provides me with excellent service for many years?

**Magnetic fields:** avoid placing your watch on computers, loudspeakers or refrigerators, since they generate powerful magnetic fields.

**Swimming in the sea:** always rinse your watch with fresh water afterwards.

**Shocks:** whether physical, thermal or other, avoid them.

**Screw-down crown:** screw the crown down carefully to prevent water from penetrating the case.

**Cleaning:** for metal bracelets, and water-resistant cases, use a toothbrush and soapy water for cleaning and dry with a soft cloth.

**Chemical products:** avoid direct contact with solvents, detergents, perfumes, cosmetics etc., since they may damage the bracelet, case or gaskets.

**Temperature:** avoid exposure to extreme temperatures (greater than 60°C, or 140°F, less than 0°C, or 32°F) or extreme temperature changes.

**Water-resistance:** a watch's water-resistance cannot be permanently guaranteed. It may notably be affected by the ageing of gaskets or by an accidental shock to the crown. We recommend you have the water resistance of your watch checked once a year by an authorized Service Center.



© **Hager** Watches

P.O. Box 1942

Hagerstown, MD

21742

**HAGERWATCHES.COM**

**info@hagerwatches.com**

**<https://twitter.com/hagerwatches>**

**<https://www.facebook.com/HagerWatches>**

Customer Services

Fashion Time

8097 Tysons Corner Center,

McLean, VA 22101

703-893-9005

Please email

info@hagerwatches.com prior to  
calling customer services

*HAGER reserves the right to modify the models illustrated in  
this catalogue at any time.*